

Linear Cable Engine MAC



The MAC is a powerful Linear Cable Engine (LCE) able to recover and to lay cable.

This machine can pull up to 4.5 Tons. There is a possibility to increase its pulling capacity by adding two or more LCE.

The MAC can be used on fiber optic cable and energy cable.

This machine can be easily transported in a one 20ft container.

Work capabilities

Operations : Cable laying and recovery

cable Diameter : Up to 200mm

Power : 50 kW

Force : 22kN @1.2m/s and 45kN @0.6 m/s

Activities : Fiber optic cables, environment safety, energy cables

Characteristics

Typical characteristics

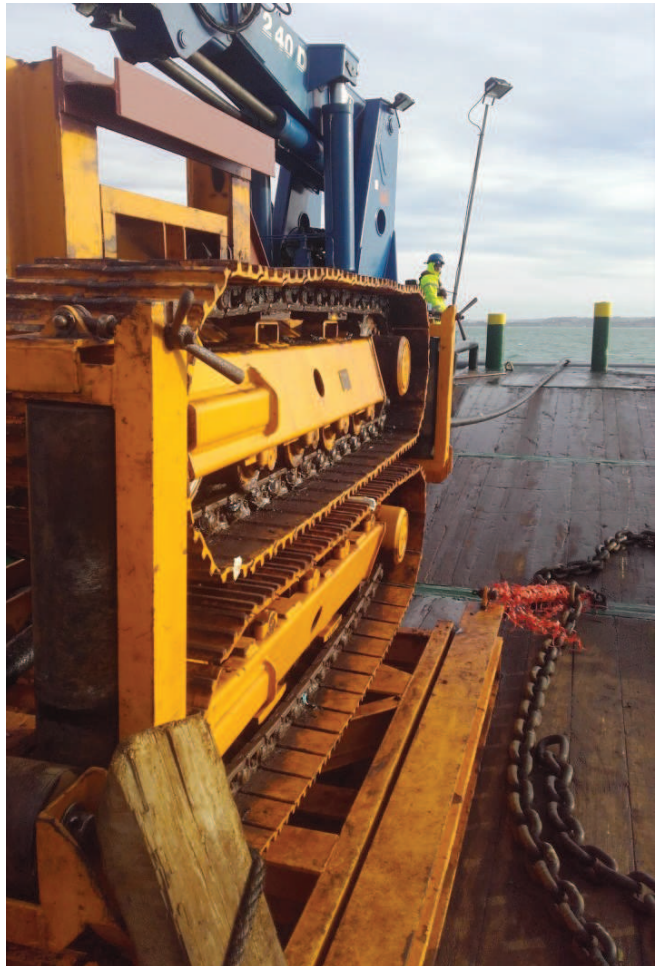
Engine dimensions : length 3.4m / breadth 1.3m / height 2.4m

HPU dimensions : length 2m / Breadth 1m / height 2m

Weight : 3.5t + 1.5t for HPU

Structure : Welded Steel E24

Piping and fittings : Stainless steel



Power

Hydraulic power : 50 kW

Operating voltage : 440V/60hz or 380V/50hz

Cooling : Air cooling system

Instrumentation and tools

Instrumentation : 1 stress gauge

Tools : 1 Hydraulics cutting press

Control : 1 Control Box

Shipboard Support

Deployment system : 4 tons crane

Ship work deck : 60m² minimum

Operating team : 1 team leader; 4 technicians and 1 divers team

This product is mostly used in France for route clearance.

We already used it to recover several cable for Orange Marine.